

Culbertson Machinery Consignment Auction

Friday, April 5, 2024

Auction Time 9:30 a.m. CST

On Tools & Miscellaneous Items

Online Internet and Live Bidding of major items
to start at 12:00 noon CST

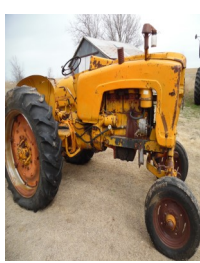
For internet bidding and to view items and pictures

Log on to www.equipmentfacts.com

LOCATION: Across the road west of Hitchcock Co. Fairgrounds, Culbertson, NE

Lunch Served By: Up In Smoke BBQ-Justin Bright

Load out available for 4 days. Friday April 5 to Monday April 8.



- | Trucks * Tractors * Skid Steer & Attachments * Vehicles * Trailers * Combine * Head | | |
|--------------------------------------------------------------------------------------------------------------------------------------------------|----------------------------------------------------------------------------------------------|---------------------------------------------------------------------|
| (I) 1995 International 4900, 466, DT, Diesel
5 sp. Spicer, air brakes, w/18' Flatbed, runs
& drives good, clean, nice truck, 352,700 miles | (I) HH Fabrication Industrial Tine Skid Steer
6' bucket w/grapple-NEW | (I) Wolverine skid steer post hole digger, 12" &
18" augers, NEW |
| (I) 2012 L230 skid steer, enclosed cab, heat,
air, 7' bucket, nice, stored inside | (I) 7' Skid steer rotary mower, hyd. driven-NEW | (I) Wolverine skid steer 6' tiller-NEW |
| (I) Bobcat 6' skid steer bucket | (I) IH Farmall F Cub, w/5' blade, 5' sickle mower | (I) Skid Steer 48" pallet fork |
| (I) H&H 18' x 7' tilt trailer w/9000 lb. winch | (I) HH Fabrication Tiger Claw 7' skid bucket-NEW | (I) AC 7580 4 WD, w/JD 12' HD dozer |
| (I) 2002 Titan 16' x 6'8" BP stock trailer, like
new, stored inside | (I) 4' x 8' BP Homemade tilt trailer, new floor | (I) 1994 Ford F250, 4x4, 5 sp., 460, w/8' flatbed |
| (I) 2002 Titan 22' x 6'8" GN stock trailer, rumber
floor, excellent shape, stored inside | (I) DTE Inc. 84BG 7' skid steer bucket w/grapple-NEW | (I) '75 Chevy C60, 4x2 sp., 16' Steel box |
| (I) 2023 20' BP flatbed trailer, ramps, like new | (I) '86 Timpete Super Hopper 40' grain trailer | (I) '75 Chevy C65, 5x2 sp., 1000 gal tank, no pump |
| (I) MM 5 Star-D336-4, diesel, 3 pt., hyd., runs | (I) '92 Chevy 3500, 1 ton dually, 454, 4x4, 5 sp., w/
Henke Feed Box, Central City Scales | (I) 16' Flatbed trailer w/2' dovetail |
| (I) JD 224 header, pickup reel w/homemade trailer | (I) '97 PJ 18' x 7'flatbed trailer, stored inside | (I) '53 Ford N AA, 4 cyl., 3 pt., 540 PTO, runs good |
| | (I) BE Pallet fork w/48" HD forks-like new | (I) '91 Chevy 2500, 2WD, auto, utility box |
| | (I) MM 5 Star-283E-4, propane, hyd., runs | (I) '09 Chevy Equinox, new tires, head gasket out |
| | | (I) JD 7720 Combine, turbo, 3213 hours |
| | | (I) '01 Chevy Tahoe, 4x4, 250,000 miles |

FARM EQUIPMENT

- | | | |
|-------------------------------------------------------------------------------|-------------------------------------------------------------|---------------------------------------------------------------------|
| (I) Bestway Field Pro II sprayer, 60' X
booms, 1000 gal. tank, hyd. driven | (I) Diamond H 12' box scrapper,
hyd. lift, HD scrape bar | (I) '05 Schaben Sprayer, 80' booms, pull type, 1250 gal. tank |
| (I) Ford NH 144 Hay Inverter | (I) Phares & Wilkens grain cart | (I) Macdon 5020 mower conditioner, 16' |
| (I) Enorossi RT 10 wheel V rake | (I) JD 506 Rotary Mower | (I) ADS Bulk Seed Buggy-Model BST-100 w/BX160 Honda engine, tarp |
| (I) '02 Bestway sprayer, 60' booms
1000 gal. tank | (I) Rhino 3 pt. posthole digger | (I) Sunflower 2331-19' chisel w/Degelman harrows |
| (I) 1000 gal. transfer tank-Honda eng. | (I) 6' 3 pt. HD blade | (I) Kuhn GA300GM Rotary Rake, 3 pt., 540 PTO, 9 tine arms |
| (I) JD 400 grinder mixer, 540 PTO, scales | (I) BW 6' Box Scrapper, NEW | (I) JD Maxi Merge 1700 8R30 vacuum planter, insecticide boxes, good |
| (I) Dual 800 Manure Spreader, 1000 PTO | (I) Vermeer R23 V rake, hyd. Driven | (I) Bush Hog 1445 disk, 24', with Degelman harrows |
| | (I) JD 535 Round Baler, twine tie | (I) Tidenberg 3 pt. box scrapper/adjustable shanks, NEW |

MORE ITEMS-CONSIGNMENTS RECEIVED UNTIL APRIL 4

FEED

- (I) 30 Round bales 1st cutting alfalfa-Appx. 1200 lbs.
 - (I) 30 Round bales 2nd cutting alfalfa-Appx. 1200 lbs.
 - (I) 30 Round bales Cane-Appx. 1600 lbs.
- (Hay to be picked up at Palisade, NE)

LIVESTOCK EQUIPMENT

- (I) 38 Brazzen 12'-5 bar standard panels-square legs-NEW
- (I) 26 Brazzen 12'-5 bar standard panels-U shape legs-NEW
- (I) 4 Brazzen 12' premium gates w/frames-NEW
- (I) 4 Brazzen 12' standard gates w/frames-NEW
- (I) 20' & 18' hay wagons on wheels-good
- (I) ATV 4 wheeler self-catching calf catcher, like new
- (I) Powder River 6' livestock chute-good floor
- (I) 8' Creep Feeder, good floor, on wheels
- 2 bale round bale feeder 3 Pt. Hyd. Bale spear
- 25 wire mesh panels

TOOLS & MISC. ITEMS

- | | | |
|-------------------------------------------------|---------------------------|----------------------------|
| (I) 18 joints of 6" gated plastic pipe | PTO grain auger | Homemade log splitter |
| Mayrath drill fill auger | Chain saws | 200 gal. propane tank |
| 4 Steel wagon wheels-good | Garage doors | Detroit motor w/water |
| '23 Cub Cadet LT425 mower w/
Bagger-near new | Load of new lumber | pump & trailer-older |
| Lg. Asst. of New truck tires | (I)12 JD planter air bags | 4 person soft side hot tub |

Semi load of good tools coming from 2 farms-very nice selection, complete list on website

TERMS: Announcements made sale day take precedence over printed or implied material. Complete payment sale day, No credit cards. No property removed until settled for. Not responsible for accidents, theft or items after purchased. All vehicles must have a clear title prior to being sold. Internet Items Marked With (I)

Vrbas Auction Service - Palisade, NE

Bryan Vrbas - 308-340-6750 or 308-285-3240

Like us on Facebook: Vrbas Auction Service

Your Complete Live and Online Auction Service

Full Sale Bill & Pictures at www.vrbasauction.com